

»
MARCH 14TH 2023
REFERENDUM
BOGOTA SCHOOL DISTRICT
QUICK REFERENCES

 **SOLUTIONS**
ARCHITECTURE
FRANK A. MESSINEO • AIA



Education is the Key to Success
OUR SCHOOLS. OUR COMMUNITY. OUR FUTURE.

FEBRUARY 1, 2023

» THE REFERENDUM CHARGE

THE DISTRICT LEADERSHIP ENGAGED SA TO...

- » Work with the Administration and staff to **IDENTIFY AND PRIORITIZE** needed facility improvements.
- » Consider ways to **IMPROVE** the existing facilities infrastructure - projects that ensure safe and functional schools.
- » Work to **PROVIDE RECOMMENDATIONS** to the Board of Education.
- » Consider ways to make the recommended improvements while taking advantage of **DEBT SERVICE ROLLING OFF** - so that there would be a **NET NEUTRAL TAX IMPACT** to the Community.



» WHAT WE ARE PROPOSING



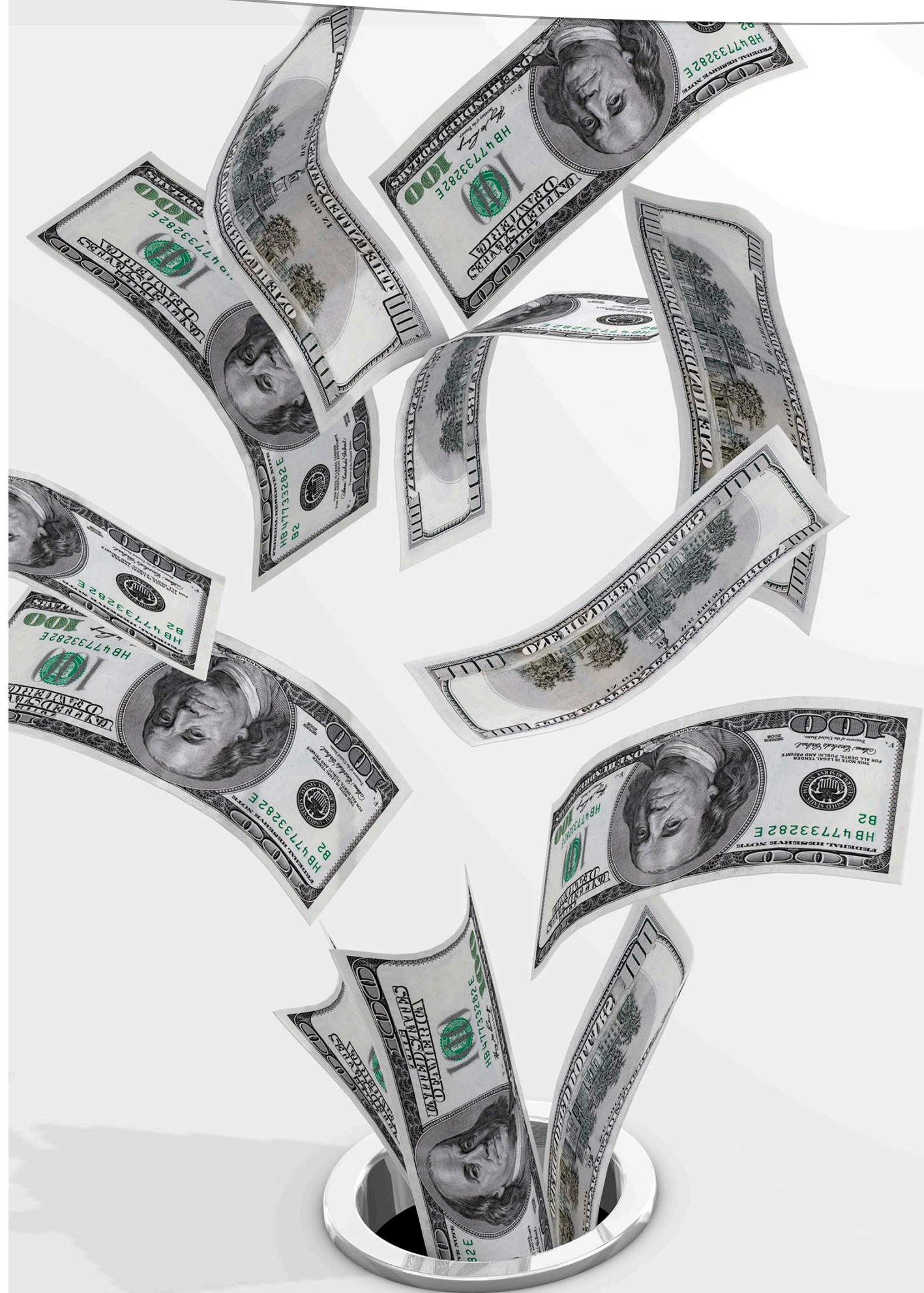
The Bogota Public Schools District is requesting funding for a District-Wide facilities renovation program to include **FUNCTIONAL, SUSTAINABLE, INFRASTRUCTURE & CLASSROOM RENOVATION PROJECTS** via a Referendum Vote on Tuesday, March 14 2023.

“EDUCATION IS THE KEY TO SUCCESS”



OUR SCHOOLS. OUR COMMUNITY. OUR FUTURE.

» WHY NOW?



- » The Board of Education and Administration have successfully addressed many facility needs within our operating budget and 2% tax increase cap. **WE NEED TO DO MORE...**
- » We are dealing with **AGING SCHOOLS (AVERAGE AGE = 105 YEARS OLD)**; some with original infrastructure items that have reached the end of their life expectancy.
- » In spite of the cap, the Bogota School District has **TRIED OUR BEST TO IMPROVE OUR SCHOOLS** and keep pace with the **ONGOING MAINTENANCE** of our buildings.

» WHY NOW?



- » Attempt to secure a fair **INTEREST RATE** as they are on the rise. This Referendum was intended to be issued last year; however the pandemic caused great delays at the state level and caused all Referenda projects to be halted.
- » By allowing the school District to finance these substantial facilities improvements over many years, **THE COST IS SPREAD OVER MANY GENERATIONS** who will use the facilities.
- » **IMPROVEMENTS TO OUR SCHOOLS AND COMMUNITY** have many benefits including the potential to add value to our homes and the quality of life in Bogota.

» DEBT SERVICE AID

STATE AID IS AVAILABLE!

- » PROJECTED Financial assistance from the state
- » **34% SAVINGS** on eligible projects (Not all projects are eligible)
 - Must be funded through a **REFERENDUM**
 - Must be tied to **EDUCATION OR REHABILITATION**
- » Debt Service Aid from the state helps to pay down the bond and this helps reduce the impact on the taxpayer.

*** Debt Service Aid Funding has been approved by DOE.*



» DEBT ROLLING OFF

\$\$\$

ON THE AVERAGE
ASSESSED HOME:
(\$263,526)

\$\$\$
AVERAGE
PER MONTH

\$\$\$
AVERAGE
PER MONTH

*REMAINS THE
SAME

EXISTING
DEBT

PROPOSED
DEBT

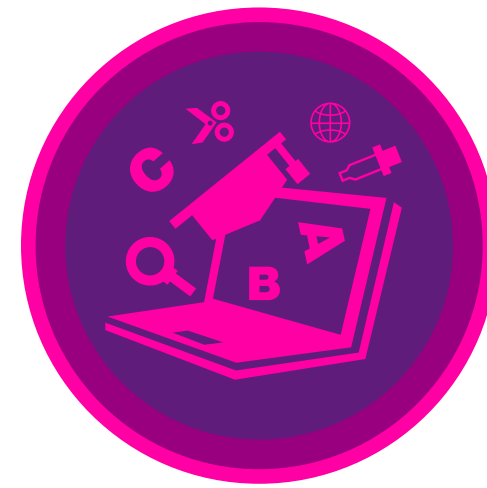
CURRENT DEBT SERVICE PAYMENTS WILL BE ENDING IN 2023

This will offset the new debt being assumed under the targeted March 2023 Referendum.

- » This will offset the new debt being assumed under the upcoming Referendum.
- » If the **DEBT SERVICE AID PROJECTIONS** are approved by DOE, the District would be able to complete approximately **\$12.8M** in capital and renovation projects with **\$0 TAX INCREASE** for the Taxpayers.

PROPOSED REFERENDUM BREAKDOWN

» REFERENDUM PRIORITIES



ENHANCED LEARNING ENVIRONMENTS

- » Educational Programs drive the need to update facilities.
- » The School Community believes that the students deserve facilities that support the academic, social, emotional, wellness and creative opportunities available to them.



STUDENT & STAFF SAFETY

- » The safety of the students and staff has always been a priority. However, now more than ever, it is crucial to ensure that our schools have all the physical systems and technologies available to protect our students and staff.



KEEP UP-TO-DATE WITH OPERATIONS

- » So much of what keeps school/facilities running smoothly is the condition of the systems and infrastructure “behind the scenes.” The roofing, windows, heating systems, tech network, and much more are at the core of keeping a building running. Although they go unnoticed in day to day use, it is crucial to keep these systems in good condition.

» REFERENDUM TWO-PART QUESTION

» The District proposes to conduct this Referendum with a “TWO-PART QUESTION”

QUESTION #1 • RENOVATIONS – ZERO TAX IMPACT

Comprised of all Capital / Educational & Facilities Infrastructure Projects listed herein

QUESTION #2 • FIELDS/SPORTS COMPLEX – TAX IMPACT

Comprised of a HS Stadium Field, Softball, Baseball, Bleachers, Sports Lighting & Walking Paths





PROPOSED PROJECTS

QUESTION #1

Q1 - CAPITAL PROJECTS



» CAPITAL PROJECTS



SCHOOLS WILL RECEIVE

- Electrical Upgrades - Antiquated Panelboards and Distribution
- Toilet Room Upgrades

Q1 - EDUCATIONAL PROJECTS



» EDUCATIONAL PROJECTS



PROJECTS RELATED TO GRADE RE-ALIGNMENT



PROPOSED GRADE RE-ALIGNMENT

E ROY BIXBY
SCHOOL
PK-2

LILLIAN M STEEN
SCHOOL
3-6

BOGOTA MIDDLE
SCHOOL
7-8

BOGOTA HIGH
SCHOOL
9-12

- ■ ■ Art Room Renovations (*All Schools*)
- ■ Pre-K and Kindergarten Toilet Renovations (*Bixby*)
- ■ ■ Gymnasium Renovations (*Bixby*)

» EDUCATIONAL PROJECTS



OTHER EDUCATIONAL PROJECTS



- ■ Renovate CTE Building to create 5 Vocational Classrooms
- ■ Classrooms Renovations
- ■ ■ Auditorium Renovations *(High School)*
- ■ Media Center Renovations *(High School)*

PROPOSED COST PROJECTIONS

» DEBT SERVICE AID

STATE AID IS APPROVED!

- » APPROVED Financial assistance from the state
- » **32% SAVINGS** is APPROVED for eligible projects.
(\$6.4 Million in State Aid has been approved for The Bogota School District)
- » Debt Service Aid from the state helps to pay down the bond and this helps reduce the impact on the taxpayer.



*** Current Debt Service Aid Calculations have been finalized and approved by DOE.*

» PROJECTED COSTS: QUESTION #1



POTENTIAL REFERENDUM PROJECTS - SCOPE / BUDGET ANALYSIS			
PROJECTS/PRIORITIES	TOTAL PROJECT COSTS	ACTUAL DEBT SERVICE AID	FINAL COST AFTER DEBT SERVICE AID
Bixby Elementary School	\$3,719,237.00	\$1,196,541.00	\$2,522,696.00
Steen Elementary School	\$868,228.00	\$286,698.00	\$581,530.00
Bogota Jr./Sr. High School	\$3,806,031.00	\$1,294,051.00	\$2,511,980.00
C.T.E Building	\$4,327,125.00	\$1,386,223.00	\$2,940,902.00
TOTAL:	\$12,720,621.00	\$4,163,513.00	\$8,557,108.00

32.73% DSA

» PROJECTED COSTS: QUESTION #2



POTENTIAL REFERENDUM PROJECTS - SCOPE / BUDGET ANALYSIS			
PROJECTS/PRIORITIES	TOTAL PROJECT COSTS	ACTUAL DEBT SERVICE AID	FINAL COST AFTER DEBT SERVICE AID
Fields / Sports Complex	\$7,233,406.00	\$2,187,358.00	\$5,046,048.00
TOTAL:	\$7,233,406.00	\$2,187,358	\$5,046,048.00

30.24% DSA

TOTAL - REFERENDUM	\$19,954,027.00	\$6,350,871.00	\$13,603,156.00
--------------------	-----------------	----------------	-----------------

31.83% DSA

ESTIMATED TAX IMPACT

» QUESTION #1 TAX IMPACT SHOULD REFERENDUM PASS...

QUESTION #1 • CAPITAL/ EDUCATIONAL RENOVATIONS

Comprised of all Capital / Educational & Facilities Infrastructure Projects

» *Tax impact calculations are based upon a conservative 4% interest rate over 25 years.*

**ESTIMATED
TAX IMPACT**
ON THE AVERAGE
ASSESSED HOME
(\$263,891)

**TOTAL
PROJECT COSTS:**
\$12,720,621
STATE AID:
\$4,163,513

**TOTAL
PROJECT COST
AFTER DSA:**
\$8,557,108

\$0⁰⁰
**INCREASE
(NET NEUTRAL)**

- » The tax impacts have been calculated assuming that the state will pay 34% debt service aid on eligible projects. This equates to 85% of the 40% debt service aid - which they've done since 2009.
- » *Current Debt Service Aid Calculations have been finalized and approved by DOE.*
- » All costs are projections based on current interest rates; costs may fluctuate slightly prior to vote.

» QUESTION #2 TAX IMPACT SHOULD REFERENDUM PASS...

QUESTION #2 • FIELDS/STADIUMS COMPLEX

HS Stadium Field, Softball, Baseball, Bleachers, Sports Lights

» Tax impact calculations are based on a conservative 4.0% interest rate over 15 years

ESTIMATED TAX IMPACT

ON THE AVERAGE
ASSESSED HOME
(\$263,891)

TOTAL
COSTS:

STADIUM
\$0

TOTAL
PROJECT COST
AFTER DSA:
\$7,233,406

\$260⁸⁰
INCREASE
ONE-TIME TAX
IMPACT

- » The tax impact have been calculated assuming that the state will pay 34% debt service aid on eligible projects. This equates to 85% of the 40% debt service aid - which they've done since 2009.
- » Current Debt Service Aid Calculations are conservatively estimated and subject to change based upon review and approval of eligible costs by DOE.
- » All costs are projections based on current interest rates; costs may fluctuate prior to vote.

» QUESTION #2 TAX IMPACT SHOULD REFERENDUM PASS...

QUESTION #2 • FIELDS/ SPORTS COMPLEX

HS Stadium Field, Softball, Baseball, Bleachers, Sports Lights

» *Tax impact calculations are based upon a conservative 3.75% interest rate over 15 years*

**ESTIMATED
TAX IMPACT**
ON THE AVERAGE
ASSESSED HOME
(\$263,891)

**TOTAL
PROJECT COSTS:**
\$7,233,406
STATE AID:
\$2,187,358

**TOTAL
PROJECT COST
AFTER DSA:**
\$5,046,048

\$184⁸⁹
**INCREASE
ONE-TIME TAX
IMPACT**

- » The tax impacts have been calculated assuming that the state will pay 34% debt service aid on eligible projects. This equates to 85% of the 40% debt service aid - which they've done since 2009.
- » *Current Debt Service Aid Calculations have been finalized and approved by DOE.*
- » All costs are projections based on current interest rates; costs may fluctuate prior to vote.

» TAX IMPACT CALCULATOR



Home Assessment (\$) NOTE - THIS IS NOT THE MARKET VALUE OF YOUR HOME	QUESTION #1 CAPITAL & EDUCATIONAL RENOVATIONS Comprised of all Capital / Educational and Facilities Infrastructure Projects Average Annual Impact (\$) 2025-2049*	QUESTION #2 FIELDS/SPORTS COMPLEX HS Stadium Field, Softball, Baseball, Bleachers, Sports Lights Average Annual Impact (\$) 2025-2039**
<div>\$263,891.00</div> <div>Please enter the ASSESSED value of home this can be obtained from the assessor's office.</div>	<div>\$0.00</div>	<div>\$184.88</div> <div>Average Monthly Impact 2025-2039**</div> <div>\$15.41</div>
	* The Question #1 calculation considers a 4% interest rate on the cost of the Net Taxable Project for a 25 year amortization.	** The Question #2 calculation considers a 3.75% interest rate on the cost of the Net Taxable Project for a 15 year amortization.

TAX IMPACT CALCULATOR

- Visit bogotaboe.com/referendum to calculate your actual tax impact
- **ASSESSED** value of your home is **NOT THE MARKET VALUE** of your home. It is **NOT** what you can sell your home for
- Regardless of assessed home value, there is no tax impact for Question #1.
- You can obtain the **ASSESSED** value of your home from the tax assessor's office or your tax documents
- If your home is reassessed in the future, the additional tax related to the Referendum will not change. The tax impact is locked after the Bonds are sold.

» WHAT DOES MY VOTE MEAN? | F.A.Q.



BOND PROPOSAL	IF YOU VOTE	YOU GET
QUESTION #1 <i>ZERO TAX IMPACT</i>	YES 	Comprised of all Capital / Educational & Facilities Infrastructure Projects as described herein Arts Learning Wellness Safety Operations
	NO 	Existing facilities remain as they are. No upgrades will be made. The district would continue to make operational/ maintenance upgrades out of their capital budget at full price, since there is no possibility of Debt Service Aid available without a Referendum.

BOND PROPOSAL	IF YOU VOTE	YOU GET
QUESTION #2 <i>\$184.89/YR OR \$15.41/MO INCREASE</i>	YES 	High School Stadium Field, Softball, Baseball, Bleachers and Sports Lighting Wellness Safety Operations
	NO 	Existing athletic facilities remain as they are. No upgrades will be made. The district would continue to make maintenance upgrades out of their capital budget at full price, since there is no possibility of Debt Service Aid available without a Referendum.



For further information and to keep updated on the District-Wide Facilities Renovation Program Referendum, please scan the QR Code to the left or visit the district website:
www.bogotaboe.com/referendum

SOLUTIONS ARCHITECTURE | FRANK MESSINEO, AIA

fm@solutions-arch.com | www.solutions-arch.com

973-484-4800 (OFFICE) | 201-618-0606 (CELL)